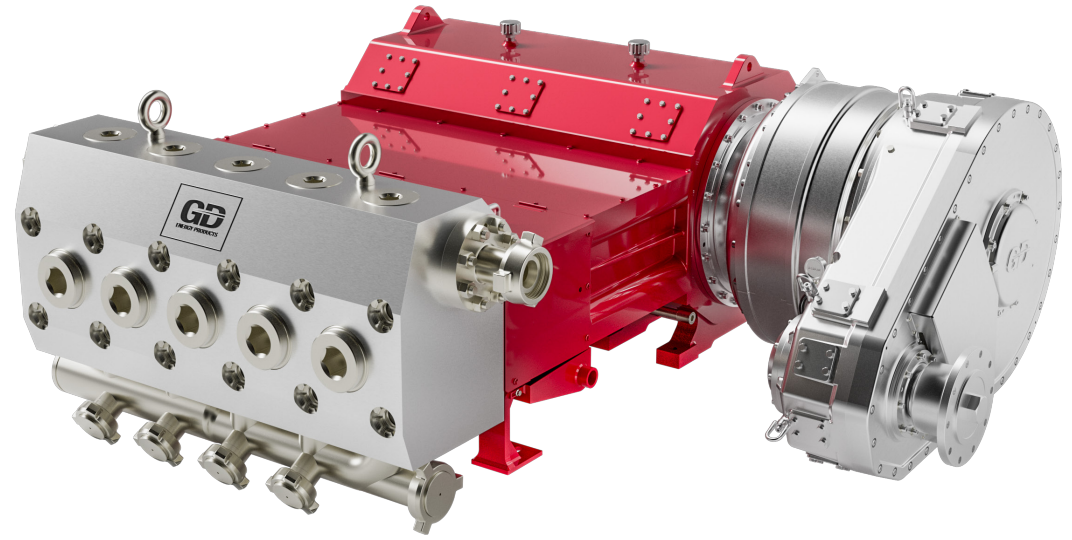


# PUMPS



## GD 5000HF CONTINUOUS DUTY HYDRAULIC FRACTURING PUMP

The GD 5000HF is part of GD Energy Products' High Flow (HF) Series – a next-generation line of frac pumps engineered to deliver greater flow per stroke, continuous-duty performance, and extended service life. Rated at 5,000 horsepower, the GD 5000HF is optimized for turbine direct drive and electric motor applications. Its smart gearing system ensures precise alignment across the full RPM range of any power source, delivering maximum output with reduced mechanical stress. The long-stroke design achieves target flow rates with fewer pump revolutions – minimizing fatigue cycles, controlling thermal load, and extending maintenance intervals. Built on a heavy-duty field-proven modular frame, the GD 5000HF sets a new benchmark for reliability, serviceability and total lifecycle value in high-output hydraulic fracturing.



### SPECIFICATIONS

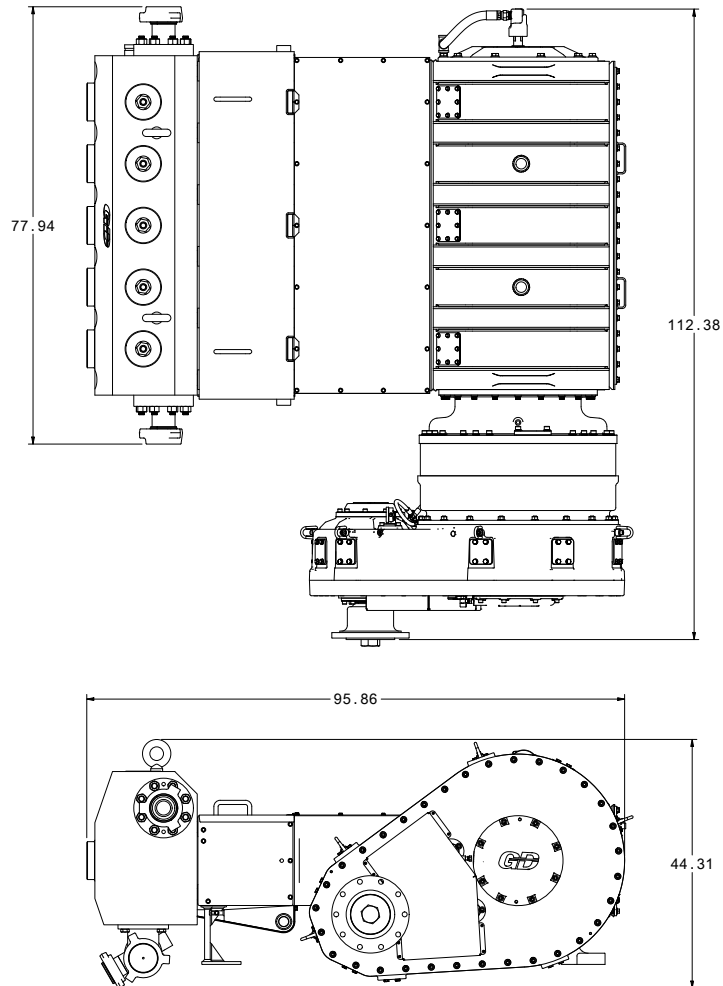
|               |              |
|---------------|--------------|
| Max Input     | 5000 BHP     |
| Max Speed     | 300 RPM      |
| Max Pressure  | 20,000 PSI   |
| Max Flow      | 2,370 GPM    |
| Rod Load      | 250,000 lbs. |
| Stroke Length | 11"          |
| Pump Weight   | 26,000 lbs.  |
| Gear Ratio    | 11.232:1     |

| PLUNGER DIAMETER | DISPLACEMENT PER REVOLUTION | DISPLACEMENT AT INPUT RPM (PUMP RPM) - CONTINUOUS SERVICE |                |     |                    |       |      |     |                    |       |      |     |                    |       |     |      |                    |       |     |      |                    |      |     |
|------------------|-----------------------------|---|----------------|-----|--------------------|-------|------|-----|--------------------|-------|------|-----|--------------------|-------|-----|------|--------------------|-------|-----|------|--------------------|------|-----|
|                  |                             | 100   |                |     |                    | 150   |      |     |                    | 200   |      |     |                    | 250   |     |      |                    | 300   |     |      |                    |      |     |
|                  |                             | 1123  |                |     |                    | 1685  |      |     |                    | 2246  |      |     |                    | 2808  |     |      |                    | 3370  |     |      |                    |      |     |
| in.              | mm.                         | Gallons   | m <sup>3</sup> | GPM | m <sup>3</sup> /hr | PSI   | bar  | GPM | m <sup>3</sup> /hr | PSI   | bar  | GPM | m <sup>3</sup> /hr | PSI   | bar | GPM  | m <sup>3</sup> /hr | PSI   | bar | GPM  | m <sup>3</sup> /hr | PSI  | bar |
| 4                | 102                         | 2.992   | 0.0113         | 299 | 68                 | 19894 | 1372 | 449 | 102                | 17186 | 1185 | 598 | 136                | 12889 | 889 | 748  | 170                | 10312 | 711 | 898  | 204                | 8593 | 592 |
| 4.5              | 114                         | 3.787   | 0.0143         | 379 | 86                 | 15719 | 1084 | 568 | 129                | 13579 | 936  | 757 | 172                | 10184 | 702 | 947  | 215                | 8147  | 562 | 1136 | 258                | 6789 | 468 |
| 5                | 127                         | 4.675   | 0.0177         | 467 | 106                | 12732 | 878  | 701 | 159                | 10999 | 758  | 935 | 212                | 8249  | 569 | 1169 | 265                | 6599  | 455 | 1402 | 319                | 5499 | 379 |

# GD 5000HF

## CONTINUOUS DUTY HYDRAULIC FRACTURING PUMP

### SPECIFICATIONS



### STANDARD FEATURES

- **11" Stroke Advantage:** Delivers up to 37% more displacement per revolution versus conventional 8" pumps, reducing fatigue cycles and wear while fully utilizing the RPM range for higher output.
- **Smart Gearing System:** Rated at 5,000 HP with an 11.2:1 gear ratio, it's built to operate within the complete RPM range of turbine direct drive and electric motor applications, maximizing output while minimizing mechanical stress.
- **Component Protection:** Greater flow per stroke reduces cycle rate, extending wear life of power end and fluid end parts including valves, seats, packing, crossheads, and bearings.
- **Maintenance Reduction:** Field-validated results show operators reporting up to 25 fewer valve and seat replacements per month across a 20-pump fleet, resulting in 125 fewer valves and seats a month.
- **High-Integrity Frame:** Thick-section skin plates, reinforced frame rings, and proprietary weld processes provide structural rigidity and resistance to high-load flex and fatigue.
- **Long-Life Tie Rods:** Designed to last the full lifecycle of the power end without replacement.
- **Proprietary Bearings:** Custom main bearing design ensures longer life and higher performance under continuous load.
- **Robust Crankshaft:** Engineered to resist deflection under high operating loads, enhancing durability and longevity.
- **Modular Assembly:** Includes removable gearbox and stuffing box, plus a reversible crosshead and housing for extended operational life and easier service.
- **Compact and Lightweight:** Up to 4,000 lbs. lighter than comparable 5,000 HP pumps, reducing rig-up time, axle loading, and footprint.
- **Field-Proven Stuffing Box:** Bolt-on design simplifies maintenance and improves sealing performance.
- **Patented Valve Cover Seal:** Moveable technology doubles valve cover seal bore life, reducing wear, extending uptime, and lowering maintenance frequency.
- **Optimized Thread Design:** Advanced crossbore and thread geometry improves fatigue life and increases retainer nut durability by 3X.
- **Eliminated Brass Crosshead Guide Sleeve:** Improves serviceability by reducing repair labor, shortening maintenance cycle times, and lowering parts inventory requirements.
- **Fewer Bolts on Fluid Ends:** Provides quicker access for maintenance, reduces service time, and lowers spare parts requirements.
- **Greater Clearance in Cradle Area:** Improves accessibility during plunger and packing service procedures.