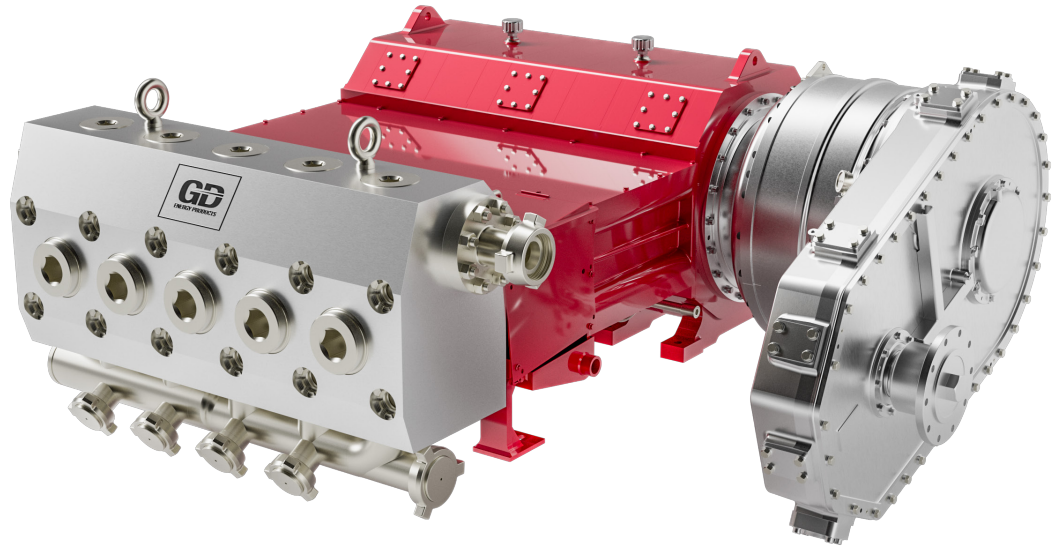


PUMPS



GD 3600HF CONTINUOUS DUTY HYDRAULIC FRACTURING PUMP

The GD 3600HF is part of GD Energy Products' High Flow (HF) Series – a next-generation line of frac pumps engineered to deliver greater flow per stroke, continuous-duty performance, and extended service life. Rated at 3,600 horsepower, the GD 3600HF is optimized for natural gas engines and dual fuel applications. Its smart gearing system ensures precise alignment across the full RPM range of any power source, delivering maximum output with reduced mechanical stress. The long-stroke design achieves target flow rates with fewer pump revolutions – minimizing fatigue cycles, controlling thermal load, and extending maintenance intervals. Built on a heavy-duty field-proven modular frame, the GD 3600HF sets a new benchmark for reliability, serviceability and total lifecycle value in high-output hydraulic fracturing.



SPECIFICATIONS

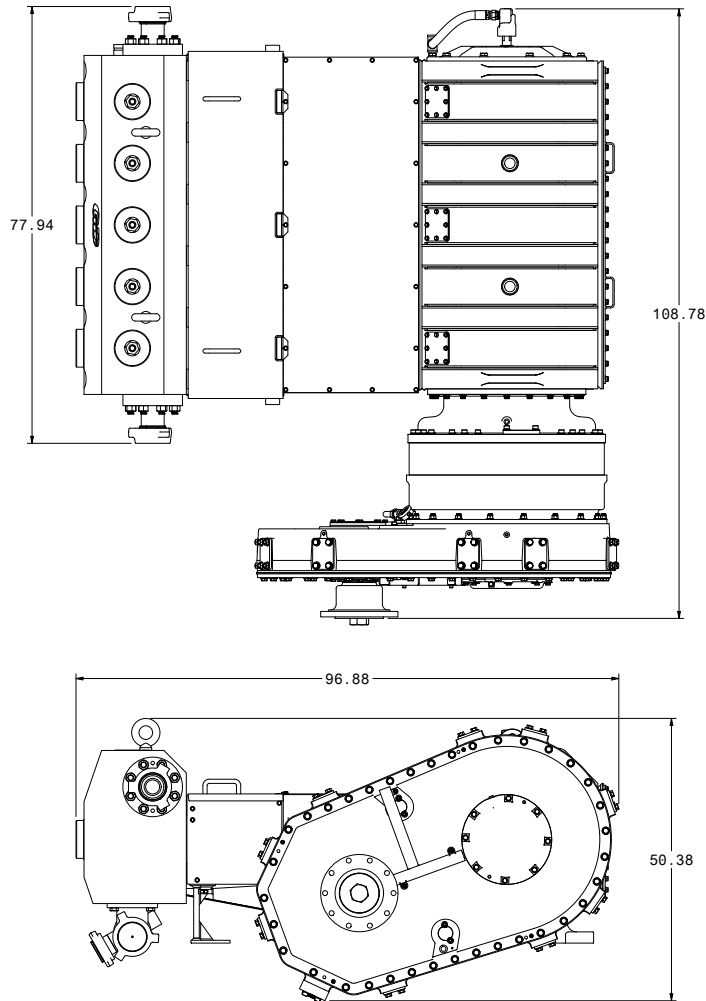
Max Input	3,600 BHP
Max Speed	300 RPM
Max Pressure	20,000 PSI
Max Flow	2,370 GPM
Rod Load	250,000 lbs.
Stroke Length	11"
Pump Weight	26,000 lbs.
Gear Ratio	7.525:1

PLUNGER DIAMETER	DISPLACEMENT PER REVOLUTION	DISPLACEMENT AT INPUT RPM (PUMP RPM) - CONTINUOUS SERVICE																					
		100				150				200				250				300					
		753				1129				1505				1881				2258					
in.	mm.	Gallons	m ³	GPM	m ³ /hr	PSI	bar	GPM	m ³ /hr	PSI	bar	GPM	m ³ /hr	PSI	bar	GPM	m ³ /hr	PSI	bar	GPM	m ³ /hr	PSI	bar
4	102	2.992	0.0113	299	68	18561	1280	499	102	12374	853	598	136	9280	640	748	170	7424	512	898	204	6187	427
4.5	114	3.787	0.0143	379	86	14665	1011	568	129	9777	67	757	172	7333	506	947	215	5866	404	1136	258	4888	337
5	127	4.675	0.0177	467	106	11879	819	701	159	7919	546	935	212	5939	410	1169	265	4752	328	1402	319	3960	273

GD 3600HF

CONTINUOUS DUTY HYDRAULIC FRACTURING PUMP

SPECIFICATIONS



STANDARD FEATURES

- **11" Stroke Advantage:** Delivers up to 37% more displacement per revolution versus conventional 8" pumps, reducing fatigue cycles and wear while fully utilizing the RPM range for higher output.
- **Smart Gearing System:** Rated for 3,600 HP with an 7.5:1 gear ratio, it's built to operate within the complete RPM range of natural gas and dual-fuel power sources, maximizing output while minimizing mechanical stress.
- **Component Protection:** Greater flow per stroke reduces cycle rate, extending wear life of power end and fluid end parts including valves, seats, packing, crossheads, and bearings.
- **Maintenance Reduction:** Field-validated results show operators reporting up to 25 fewer valve and seat replacements per month across a 20-pump fleet, resulting in 125 fewer valves and seats a month.
- **High-Integrity Frame:** Thick-section skin plates, reinforced frame rings, and proprietary weld processes provide structural rigidity and resistance to high-load flex and fatigue.
- **Long-Life Tie Rods:** Designed to last the full lifecycle of the power end without replacement.
- **Proprietary Bearings:** Custom main bearing design ensures longer life and higher performance under continuous load.
- **Robust Crankshaft:** Engineered to resist deflection under high operating loads, enhancing durability and longevity.
- **Modular Assembly:** Includes removable gearbox and stuffing box, plus a reversible crosshead and housing for extended operational life and easier service.
- **Compact and Lightweight:** Up to 4,000 lbs. lighter than comparable 3,600 HP pumps, reducing rig-up time, axle loading, and footprint.
- **Field-Proven Stuffing Box:** Bolt-on design simplifies maintenance and improves sealing performance.
- **Patented Valve Cover Seal:** Moveable technology doubles valve cover seal bore life, reducing wear, extending uptime, and lowering maintenance frequency.
- **Optimized Thread Design:** Advanced crossbore and thread geometry improves fatigue life and increases retainer nut durability by 3X.
- **Eliminated Brass Crosshead Guide Sleeve:** Improves serviceability by reducing repair labor, shortening maintenance cycle times, and lowering parts inventory requirements.
- **Fewer Bolts on Fluid Ends:** Provides quicker access for maintenance, reduces service time, and lowers spare parts requirements.
- **Greater Clearance in Cradle Area:** Improves accessibility during plunger and packing service procedures.